



# **Corporate Parenting Report**

**March 2014**

**Children Looked After  
Children Subject to a Child Protection Plan**

**(Activity to end of March 2014)**

# CONTENTS

<b>PART A:</b>	<b>PERFORMANCE INFORMATION</b>	<b>3</b>
A1)	<a href="#"><u>KEY PERFORMANCE INDICATORS</u></a>	3
<b>Part B:</b>		
B1)	<a href="#"><u>NUMBERS OF CLA &amp; CPP</u></a>	6
<b>PART C:</b>	<b>CHILDREN LOOKED AFTER (CLA)</b>	<b>7</b>
C1)	<a href="#"><u>AGE GROUPS</u></a>	7
C2)	<a href="#"><u>GENDER</u></a>	8
C3)	<a href="#"><u>ETHNICITY</u></a>	9
C4)	<a href="#"><u>PLACEMENT TYPE</u></a>	10
C5)	<a href="#"><u>CLA EDUCATION</u></a>	11
<b>PART D:</b>	<b>CHILDREN SUBJECT TO A CHILD PROTECTION PLAN (CPP)</b>	<b>11</b>
D1)	<a href="#"><u>AGE GROUPS</u></a>	12
D2)	<a href="#"><u>ETHNICITY</u></a>	13
D3)	<a href="#"><u>GENDER</u></a>	14
D4)	<a href="#"><u>CATEGORY OF ABUSE</u></a>	15
D5)	<a href="#"><u>DURATION OF PLAN</u></a>	16

# Part A – Key Performance Indicators

## Key Indicator Summary 2013/14

Quarterly Performance for Children's Services Social Care

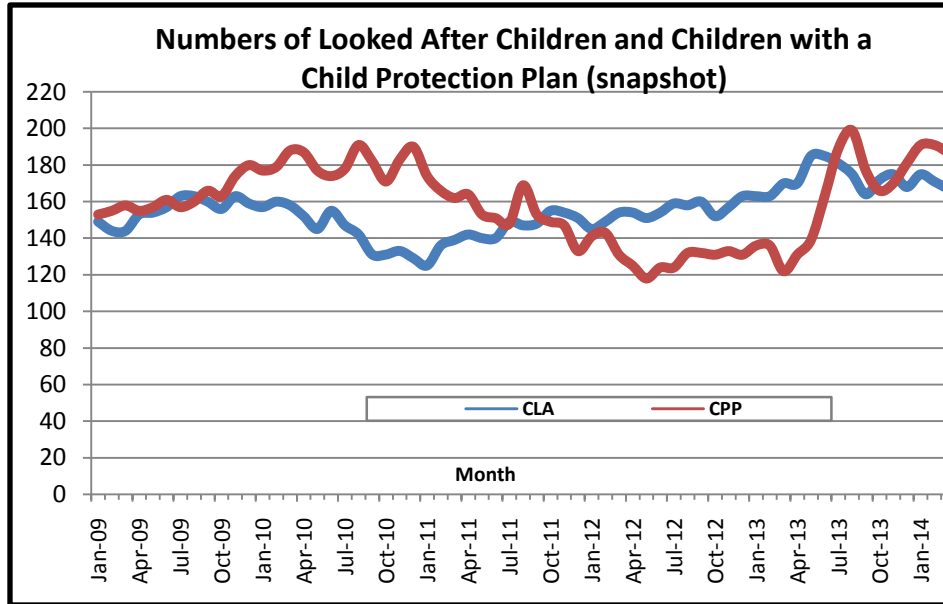
Performance rag rated against target

PI Ref	PI Description	England average 12/13	Statistical Neighbours Average 12/13	Best London LA's 12/13 or London Average	Harrow 11/12	Harrow 12/13	Q1 13/14	Q2 13/14	Q3 13/14	
1	% of referrals leading to the provision of a social care service (YTD)	New indicator					95.4	92.4	86.1	
2	Rate of Assessments per 10,000 child population. Measured per Quarter (Forecast of Annual Rate).	New indicator					105.8 (423.2)	120.5 (487.6)	121.2 (456.2)	
3	Timeliness of Assessments (% complete in 45 working days) - YTD Target - 90%	New indicator					87.7	84.0	79.8	
4	Rate of S47 enquiries per 10,000 child population. Measured per Quarter (Forecast of Annual Rate).	109.9	93.8	106	54.4	83.3	45.7 (182.8)	28.1 (149)	25.7 (135.33)	
5	Children becoming the subject of a CPP (rate per 10,000 of the CYP population) Measured per Quarter (Forecast of Annual Rate).	46.0	41.7	40.0	25.7	26.3	13.9 (55.6)	25.5 (53.6)	21.4 (46.53)	
6	Rate of ICPCs per 10,000 of the CYP population. Measured per Quarter (Forecast of Annual Rate).	49.6	46.8	43.2	30.1	40.4	18.3 (73.2)	14.3 (64)	10.9 (58)	
8	Rate of CPP per 10,000 population. (snaphot)	37.8	36.5	35.7	23.6	23.6	29.5	31.9	32.8	
9	CPP for 2nd or subsequent time (within 2 yrs of last plan) (%)	New indicator				6.4	8.3	4.2	2.0	2.5

PI Ref	PI Description	England average 12/13	Statistical Neighbours Average 12/13	Best London LA's 12/13 or London Average	Harrow 11/12	Harrow 12/13	Q1 13/14	Q2 13/14	Q3 13/14
10	% of children with CPP for 2 years or more (snapshot) Target - 6%	3.6	3.4	5.54	9.3	4.9	4.3	4.5	1.1
11	Ceased CPP that lasted 2 or more years (% YTD) Target - 7%	5.6	9	London 8.1 Brent (2.5) Greenwich(4.7) Enfield (4.8)	17.9	11.2	0.0	4.3	6.5
12	Rate of CLA per 10,000 population. Measured Quarterly. (snapshot)	60 (2012-13)	46	55	28.3	30.0	33.5	29.7	30.4
13	% of CLA with up to date Health Checks (CLA 1 yr +)	Not published					91.1	77.3	85.9
14	CLA placement stability: number of moves (% with 2+ moves) Target - 11%	11.0	11.0	Hillingdon (5) H&F (8) Islington (9)	17.0	15.5	0.5	3.0	4.2
15	CLA placement stability: length of placement (%) Target - 71%	68.0	68.0	Croydon (82) Waltham Forest(80) Westminster (79)	71.4	52.8	50.0	55.6	52.9
16	% of CLA placed more than 20 miles away from home (snapshot)	16.0	18.0	18.0	19.0	19.0			18.9

PI Ref	PI Description	England average 12/13	Statistical Neighbours Average 12/13	Best London LA's 12/13 or London Average	Harrow 11/12	Harrow 12/13	Q1 13/14	Q2 13/14	Q3 13/14	
17	% of Care Leavers in suitable accommodation (19 year olds)	88.0	New indicator - change in definition of cohort (historical data is based on the older definition which involved a smaller cohort)		77.0	80.0	91.7	88.5	91.7	
18	% of Care Leavers in suitable accommodation (20 year olds)	New indicator						66.7	88.9	90.0
19	% of Care Leavers in suitable accommodation (21 year olds)	New indicator						60.0	69.2	76.5
20	% of Care Leavers not in education, employment or training (19 year olds)	36.0	New indicator - change in definition of cohort (historical data is based on the older definition which involved a smaller cohort)		36.0	53.3	16.7	23.1	30.6	
21	% of Care Leavers not in education, employment or training (20 year olds)	New indicator						44.4	23.5	20.0
22	% of Care Leavers not in education, employment or training (21 year olds)	New indicator						60.0	46.1	64.7
23	<b>Educational attainment of school aged Children (2012-13) (CiN &amp; CPP, CLA)</b>						Harrow	England average	SN Average	
	Percentage of children in Need (CiN + CPP) who achieve 5+ A* -C grades at GCSE including English and mathematics. (So							22.4	16.1	17.63
	Percentage of children Looked After 12 months+ who achieve 5+ A* -C grades at GCSE including English and mathematics							8.3	14.6	18.8
24	<b>Attendance at school of school aged Children in Need (CiN &amp; CPP, CLA) (2011-12)</b>									
	Percentage of sessions missed. (CiN & CPP)							11.6	10.4	10.15
	Percentage classed as persistent absentees (CiN & CPP)							17.2	15.4	14.26
	Percentage of sessions missed. (CLA 1 year+)							7.8	4.7	4.9
25	<b>Exclusion from school of school-aged Children in Need (CiN &amp; CPP), CLA are measured Separately</b>									
	Percentage of children with at least one fixed exclusion. (CiN & CPP)							6.2	7.8	6.98
	Percentage of children with at least one fixed exclusion. (CLA 1 year+)						supressed due to low numbers		13.2	12.4

## Part B –Numbers of CLA and CPP over time

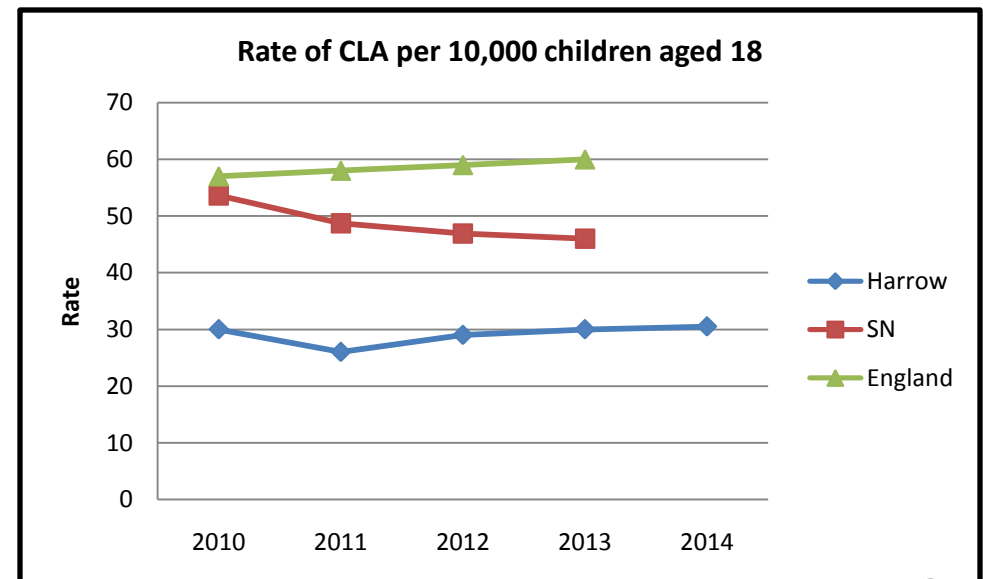
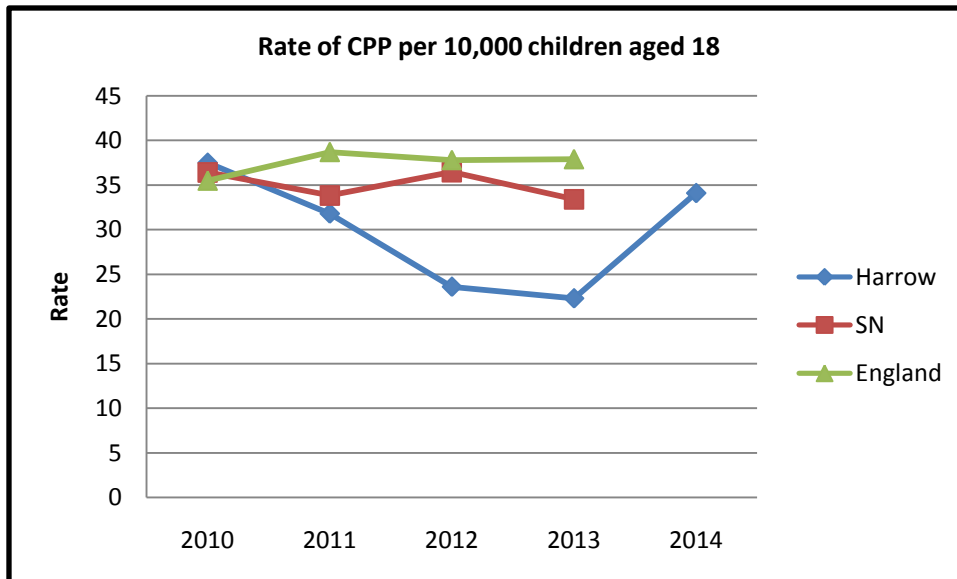


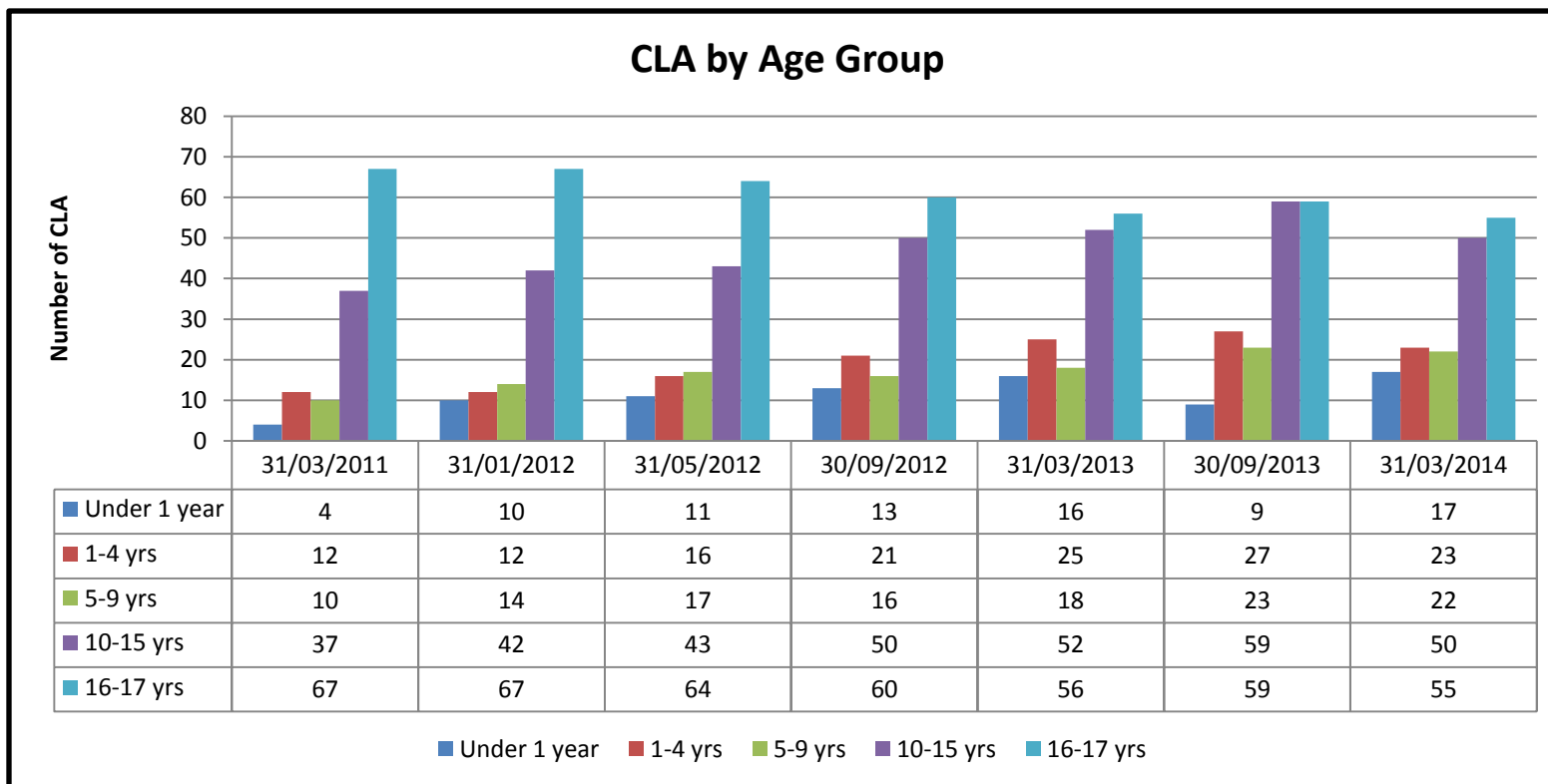
CPP numbers have risen significantly in 2013-14 to the current level of 187. The rise which corresponds with a lowering of thresholds, gives a rate of 34.1 per 10,000, which brings Harrow closer to comparator rates and in line with Statistical neighbour averages.

CLA numbers have also risen to 167. Harrow continues to have a significantly lower rate of CLA than comparators. Further analysis of the statistical neighbours group shows that Merton, Kingston and Redbridge have similar rates. The average is pulled up by Croydon Hillingdon and Hounslow which have high numbers of CLA.

### Comparator Info: Rates per 10,000 population

( 2012-13)	London	England	Harrow	Harrow 2014 Q4 provisional
<b>CPP</b>	<b>35.7</b>	<b>37.8</b>	<b>23.6</b>	<b>34.1</b>
<b>CLA</b>	<b>55</b>	<b>60</b>	<b>30</b>	<b>30.5</b>



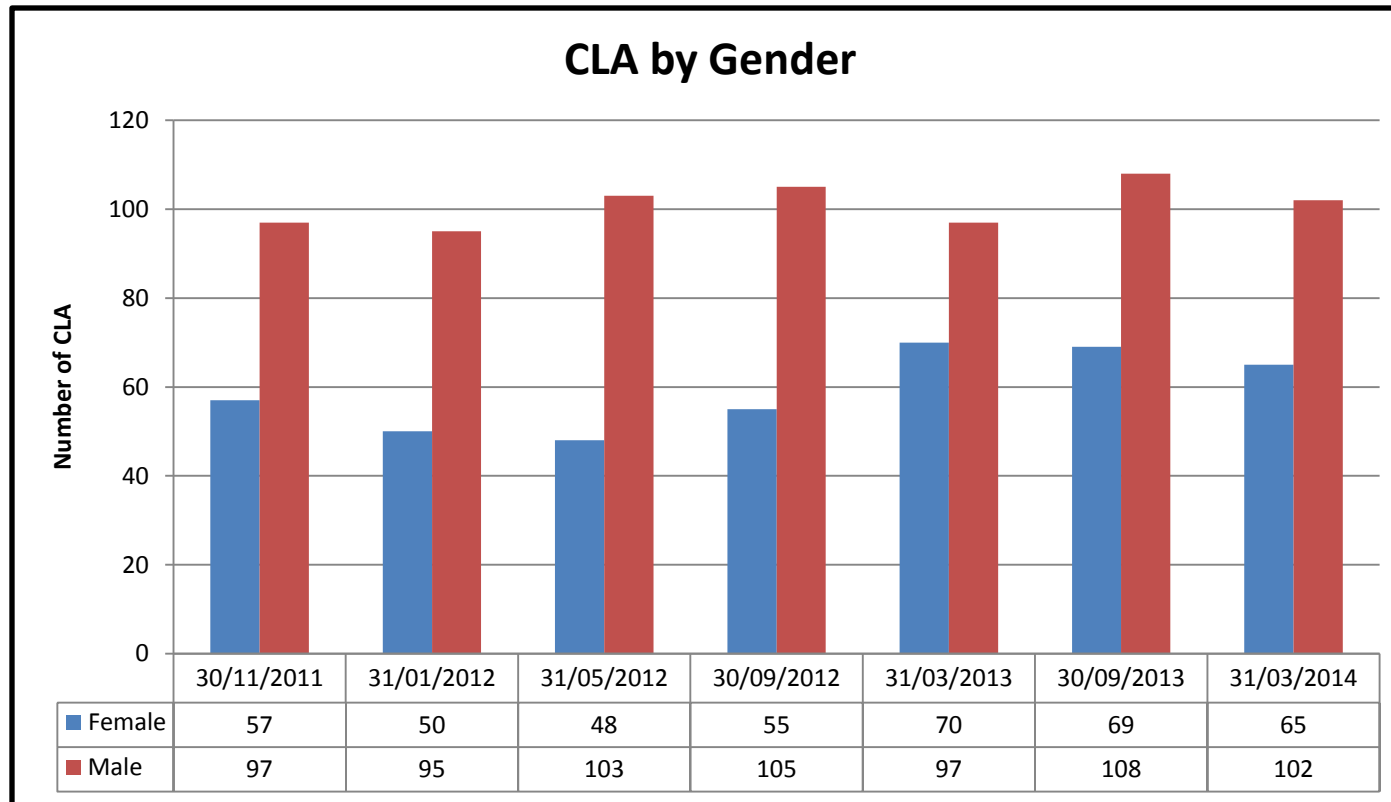


Comparator Information for percentages of age of CLA at 31st March 2013 (Source: SSDA903)	Age at 31 March 2013(years) (%)				
	Under 1	1 to 4	5 to 9	10 to 15	16 -17
England	6	18	19	36	20
London	6	14	17	36	28
Statistical neighbours Average	5	13	15	35	32
<b>Harrow (Numbers)</b>	<b>10% (15)</b>	<b>15% (25)</b>	<b>11% (20)</b>	<b>32% (55)</b>	<b>33% (55)</b>
<b>Harrow Q4 2013-14 (provisional)</b>	<b>10.2%</b>	<b>13.8 %</b>	<b>13.2%</b>	<b>29.9%</b>	<b>32.9%</b>

Two thirds of our CLA population fall in 10-17 years age group. The number of CLA 10-15 years has been rising steadily and planning for Care Leaving Services will need this to factor this in.

The proportion of 16-17 year olds continue to be higher than National averages but similar to statistical neighbours We also have a higher proportion of children under the age of 1

## C2 – Gender



### Comparator info CLA by gender 31.3.2013

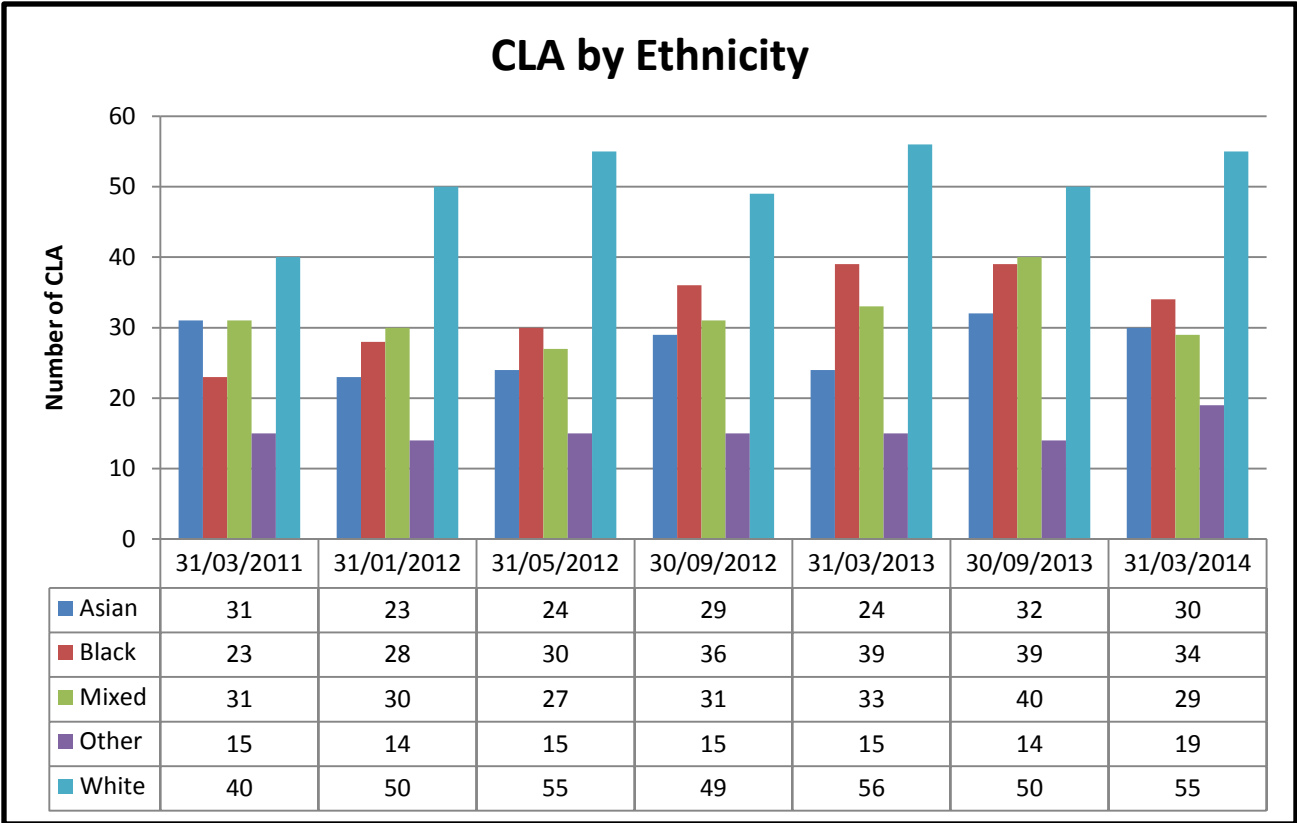
Source: SSDA903

	Gender	
	Male	Female
<i>England</i>	55	45
<i>London</i>	56	44
<i>Statistical neighbours Average</i>	60	40
<b>Harrow</b>	<b>58% (95)</b>	<b>42% (57)</b>
<b>Harrow Q4 2013-14 (provisional)</b>	<b>61.1%</b>	<b>38.9%</b>

Harrow historically has a higher proportion of males who are looked after., the proportion of CLA who were female had been increasing but has recently dropped to 38.9% at 31<sup>st</sup> March 2014.



C3 - Ethnicity



As would be expected of Harrow's diverse population, the representation of Black and Minority Ethnic groups is considerably higher than England and the statistical neighbour average.

At Q4 there is a slight increase in numbers from Asian background, and a reduction in those from mixed and Black backgrounds. Overall two thirds of Harrows children looked after population is from BME groups

**Comparator Information on Ethnicity at 31.03.2013 (%)**

Source: SSDA903

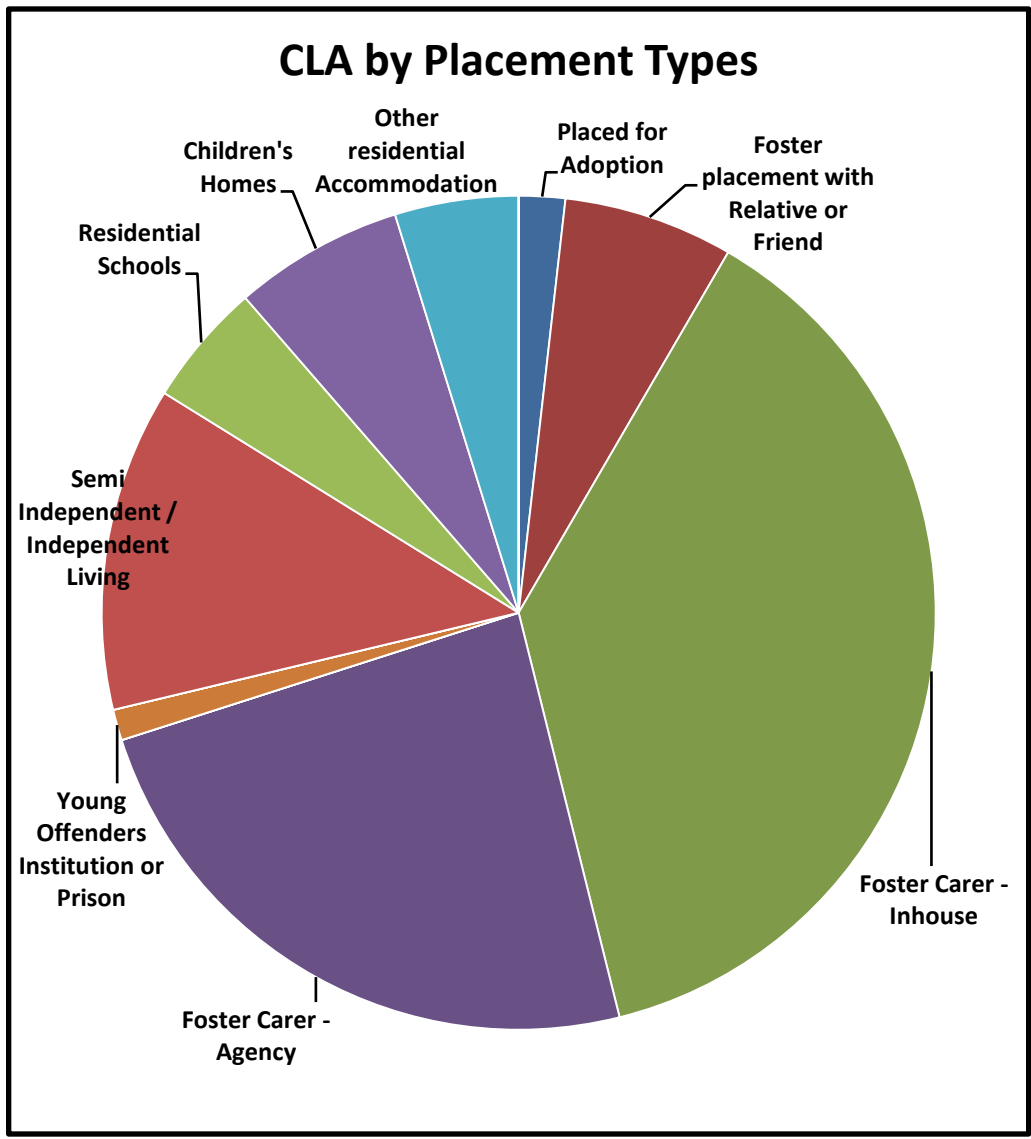
	White	Mixed	Asian or Asian British	Black or Black British	Other Ethnic Groups
Statistical Neighbour	43	15	13	21	6
England	78	9	4	7	3
<b>Harrow</b>	<b>33</b>	<b>19</b>	<b>15</b>	<b>23</b>	<b>10</b>
Harrow Q4 provisional	33	17	18	20	11

### C4 – Placement Type

Harrow has a lower proportion of children in foster placements and slightly higher proportion of children in residential schools.

Harrow Placement Details at 31<sup>st</sup> March 2014

Placement Type	Sep-13	Mar-14
Placed for Adoption	5	3
Foster placement with Relative or Friend	27	11
Foster Carer - Inhouse	60	63
Foster Carer - Agency	39	40
Secure Unit	1	0
Young Offenders Institution or Prison	0	2
Placed with Parents	0	0
Semi Independent / Independent Living	14	21
Residential Schools	10	8
Children's Homes	14	11
Other residential Accommodation	6	8
Missing from Placement	0	0
<b>Grand Total</b>	<b>176</b>	<b>167</b>



Overall all types of foster care placements (69%), statistical neighbours and England averages are around 73 - 75%. Numbers of in-house placements have been increasing. Particular challenges are faced with our older CLA cohort.

All placement moves for scrutinised at a panel for authorisation before they are implemented. Support packages have been developed to prevent placement breakdown .

## C5 – CLA Education Data

**Information only: this data will be updated at Q2 2014** \*note that DfE indicators include only CLA who have been looked after for more than one year to measure outcomes

### CLA educational attainment trends

CLA looked after for over a year at 31/03/13	2011	2012	2013
<b>Total children in KS2 cohort:</b>	<b>2</b>	<b>2</b>	<b>3</b>
Attained at least Level 4 in Maths at end of KS2	50%	0%	67%
Attained at least Level 4 in English at end of KS2	0%	0%	67%
Attained at least Level 4 in both English and Maths	0%	0%	67%
<b>Total young people in GCSE cohort:</b>	<b>19</b>	<b>13</b>	<b>12</b>
GCSE: Attained at least 1 A* - G	47.4%	46.2%	33.3%
GCSE: Attained 5 or more A* - G	31.6%	23.1%	16.7%
GCSE: Attained 5 or more A* - C	5.3%	0%	8.3%
GCSE: Attained 5 or more A* - C inc Eng. & Maths	5.3%	0%	8.3%

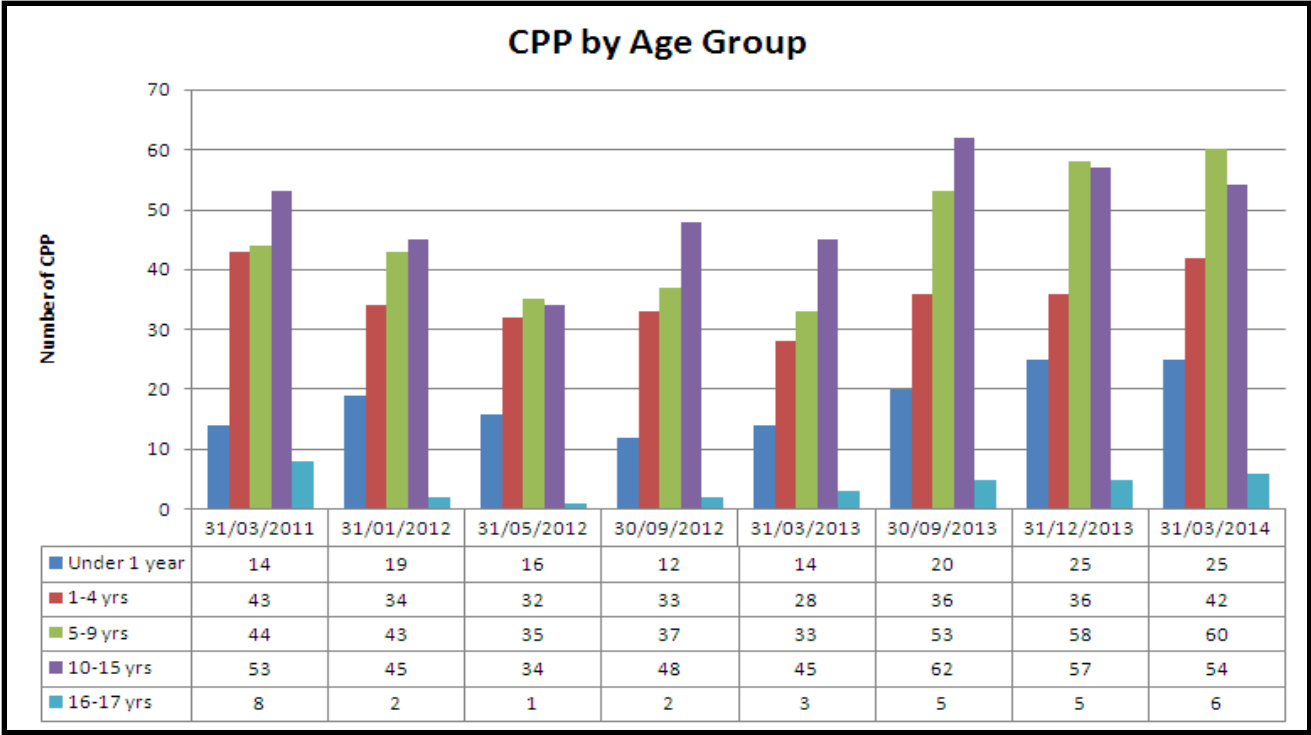
### Detail for 2013 GCSEs:

	TOTAL IN COHORT	GCSE ONLY					GCSE & Equiv.	
		Sat GCSE Exams?	1 A*-G	5 A*-G	5* A-C	5* A-C inc Eng Math	5* A-C	5* A-C inc Eng Math
<b>All CLA</b>	<b>23</b>	13	13	8	3	3	3	3
%	-	56.5%	56.5%	34.8%	13.0%	13.0%	13.0%	13.0%
<b>All CLA (1 YR+)</b>	<b>12</b>	4	4	2	1	1	1	1
%	-	33.3%	33.3%	16.7%	8.3%	8.3%	8.3%	8.3%

# Part D: Children Subject to a Child Protection Plan (CPP)

Children are made the subject of a child protection plan (CPP) when they are considered to be at risk of physical, sexual, emotional harm or neglect. Overall Harrow has seen an increase in the number of children with a CPP. At 31<sup>st</sup> March 2013, 123 children had a Child Protection Plan. This has risen to 187 as of 31<sup>st</sup> of March 2014.

## D1 - CPP by Age

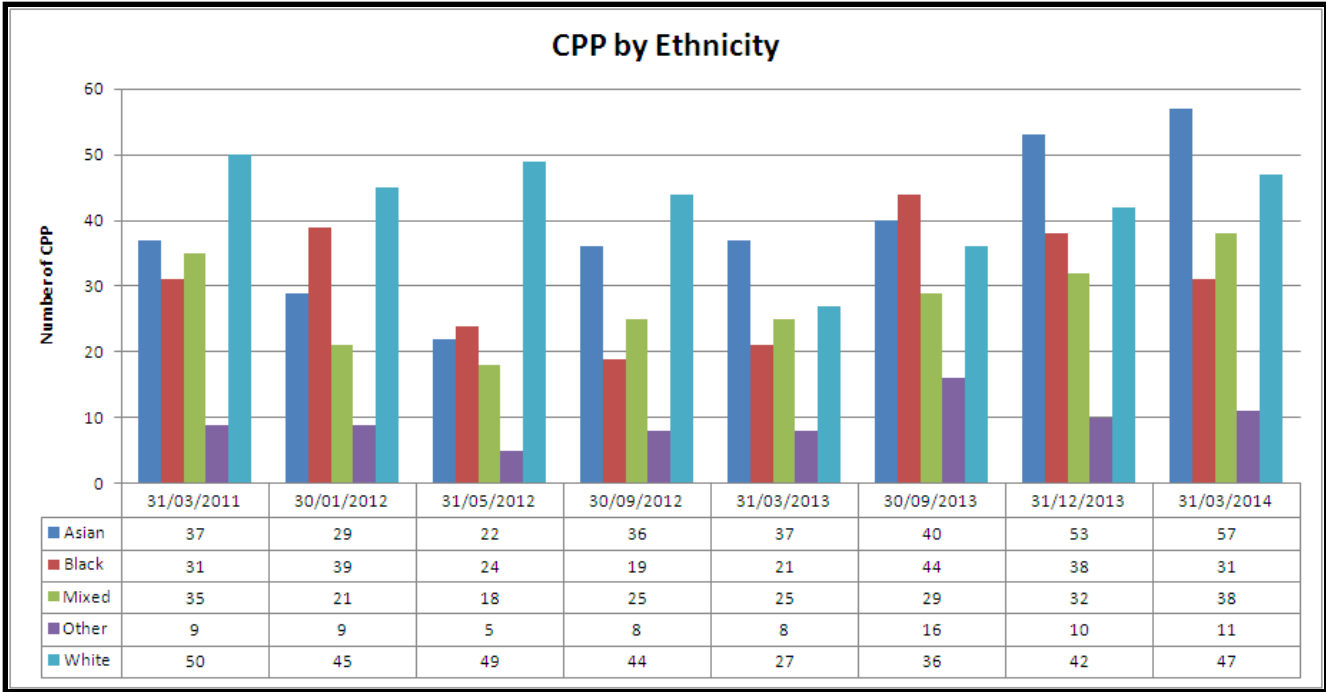


We have a higher proportion of children with CP plans in the 5-9 & 10 – 15 years age group. There is also an increase in young people aged 16+ with a CPPlan

### Comparator Info CPP by age group (%) 31<sup>st</sup> March 2012

	Under 1	1-4 years	5-9 years	10-15 years	16 & over
England	13.40	30.50	28.50	25.20	2.20
London	13.25	29.43	29.28	26.35	1.85
Harrow	13.18	24.81	27.91	33.33	0.78
Harrow Mar 14	13.4	22.5	32.1	28.9	3.2

D2 - CPP by Ethnicity

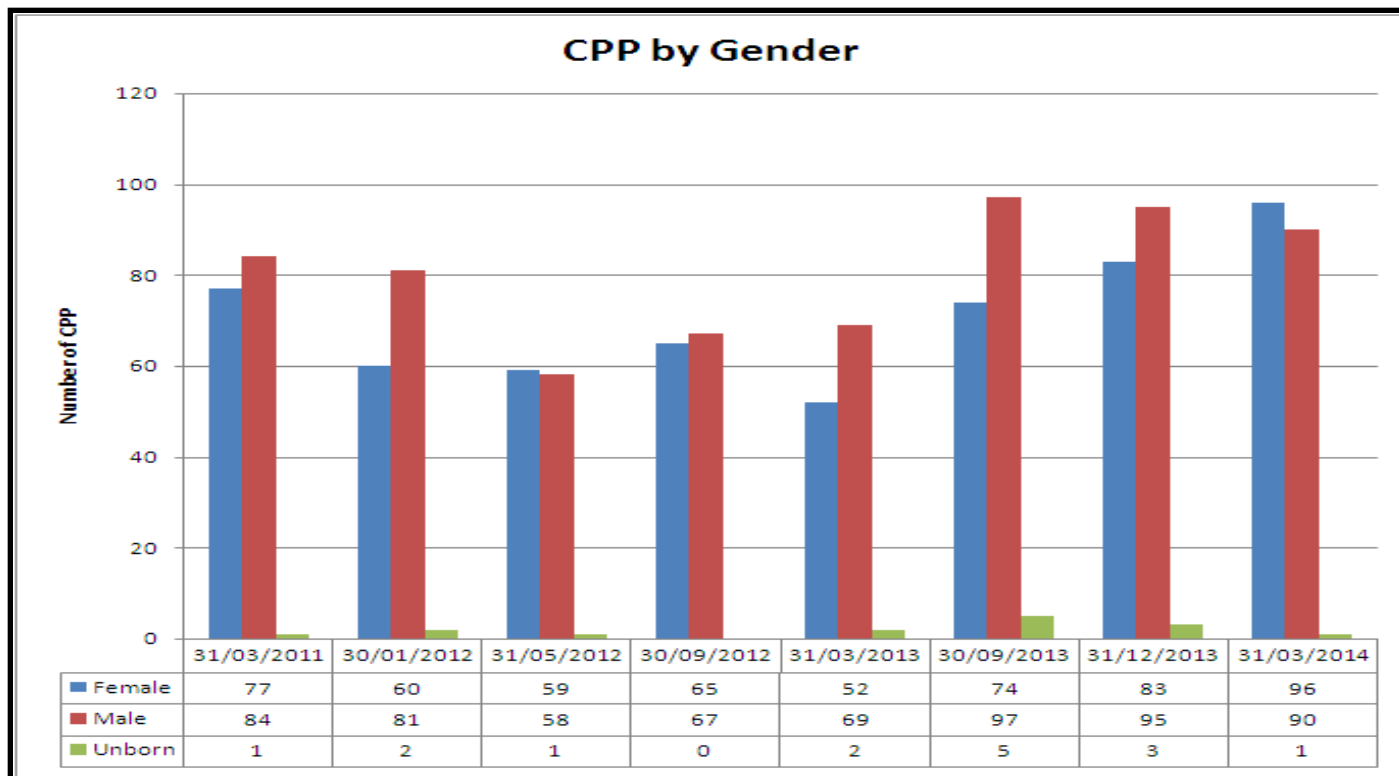


. The proportion of BME groups is considerably higher than England and statistical neighbour averages but this is as expected due to Harrow’s diverse population. Three fourths of children requiring a child protection plan in Harrow are from BME groups . There has been a steady increase in children from Asian backgrounds requiring a CP Plan

Comparator Information Ethnicity of Children subject to Child Protection Plans at 31<sup>st</sup> March 2012 (%) 2013 data has not been published by DfE

Source: Cin Census

	White	Mixed	Asian or Asian British	Black or Black British	Other Ethnic Groups	Refused / Unknown
London	45.1	15.3	12.2	21.6	2.8	3
England	75.9	7.9	5.4	4.9	1.2	4.6
<b>Harrow</b>	<b>34.1</b>	<b>14</b>	<b>25.6</b>	<b>24</b>	<b>2.3</b>	<b>0</b>
<b>Harrow Mar 14</b>	<b>25.1</b>	<b>20.3</b>	<b>30.5</b>	<b>16.6</b>	<b>5.9</b>	<b>1.6</b>



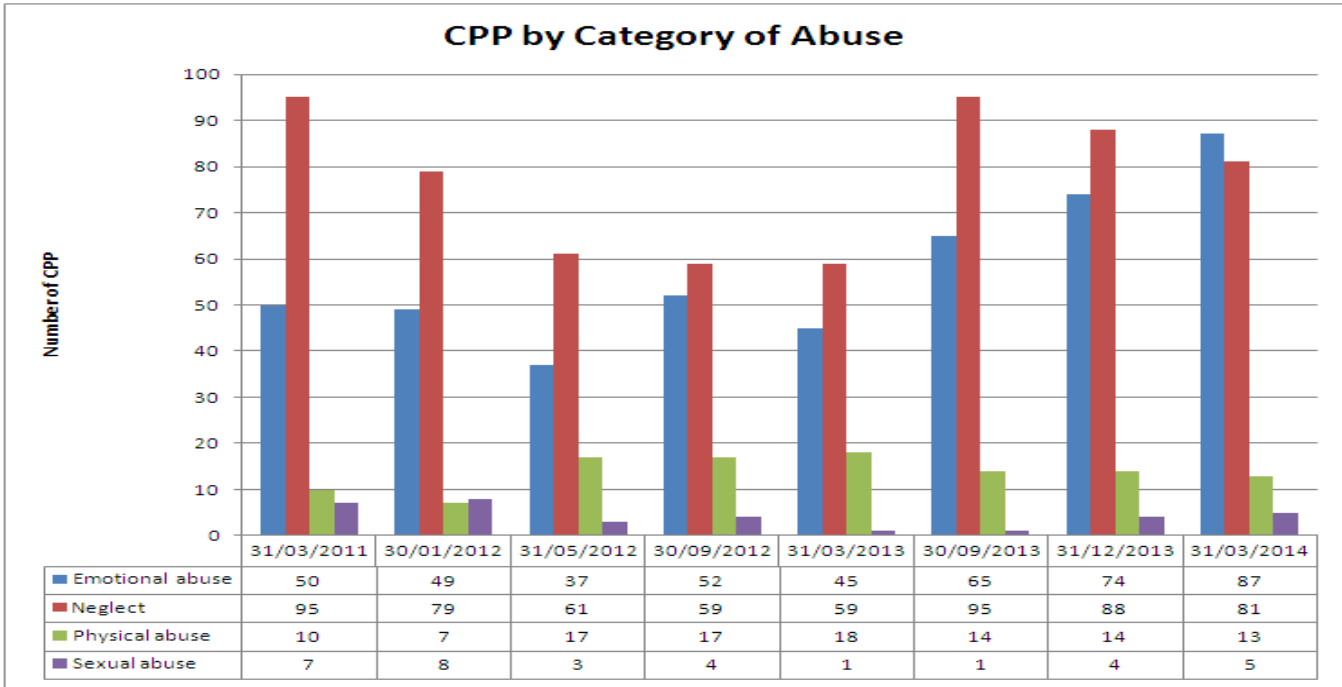
The gender of Harrow children with Child Protection plans is similar to London & England averages.

**Comparator information for age groups & gender of children with Child Protection plans at 31<sup>st</sup> March 2012(%)**  
 2013 data has not been published by DfE

Source: CiN Census

	Male	Female	Unborn/ Unknown Gender
England	50	48	2
London	49.1	48.4	2.5
<b>Harrow</b>	<b>51.2</b>	<b>47.3</b>	<b>1.5</b>
<b>Harrow Mar 14</b>	<b>48.1</b>	<b>51.3</b>	<b>0.5</b>

## D4 - CPP by Category of Abuse



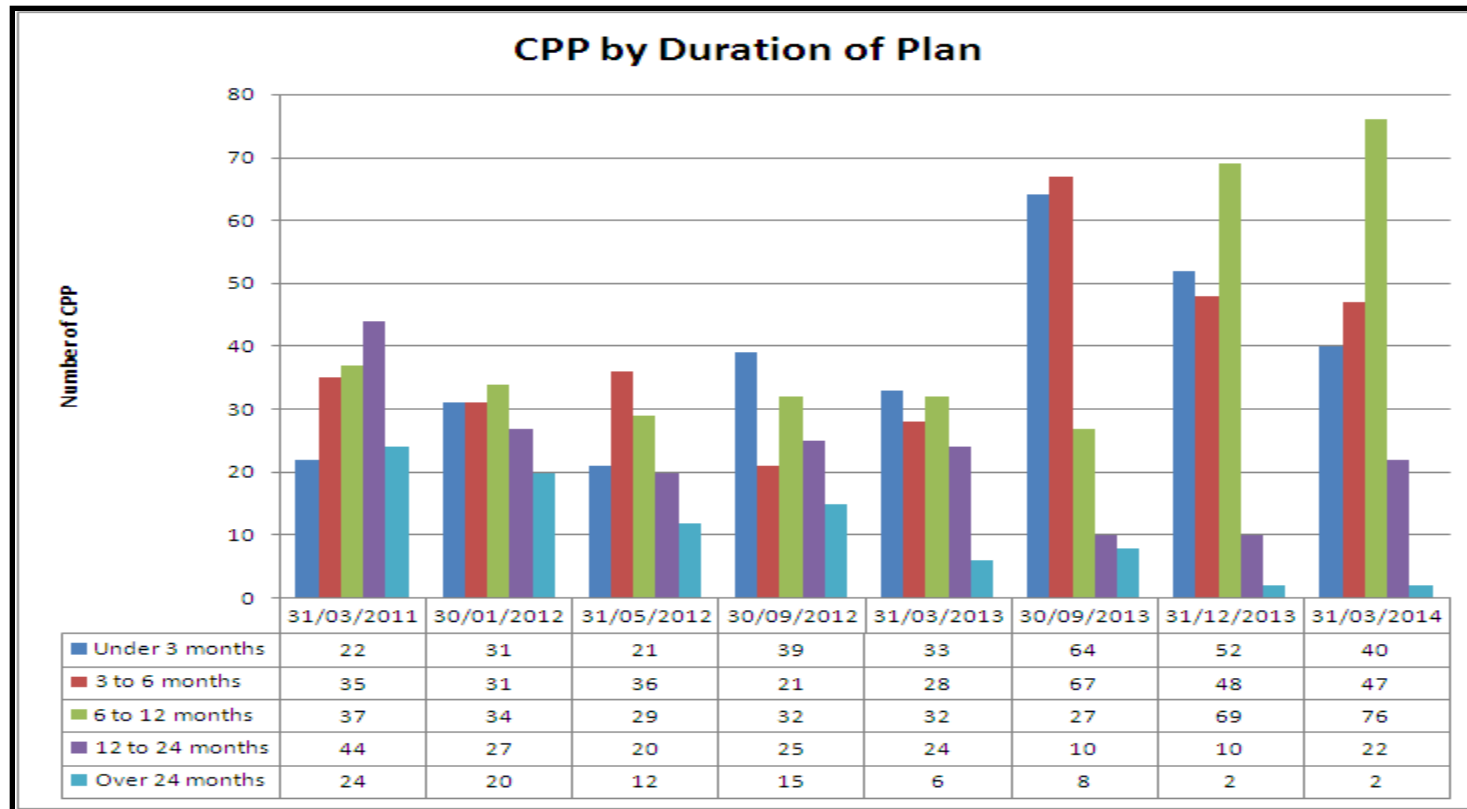
Since 31<sup>st</sup> March 2011 there had been a decreasing trend in the number of children requiring a plan under the category of neglect, at the end of Sept 2013. this had risen significantly and similar to numbers at 31<sup>st</sup> March 2011. Emotional abuse at 31<sup>st</sup> March 2014 is at its highest peak in the timeframe shown.

### Comparator Info - Category of CPP at 31st March 2013 (%)

Source: CiN Census

	Neglect	Physical Abuse	Sexual Abuse	Emotional Abuse	Multiple
<b>England</b>	<b>41.6</b>	<b>10.8</b>	<b>4.7</b>	<b>31.6</b>	<b>11.3</b>
<b>London</b>	<b>40.9</b>	<b>10.3</b>	<b>3.1</b>	<b>32.8</b>	<b>13.1</b>
<b>Harrow</b>	<b>50.8</b>	<b>15.6</b>	<b>0.0</b>	<b>33.6</b>	<b>0.0</b>
<b>Harrow Mar 14</b>	43.5	7.0	2.7	46.8	3.2

## D5 - CPP by duration of plan



Co-ordinated work has taken place to progress and end plans in a timely manner, meaning that the numbers of plans lasting over 12 months have reduced.

The number of plans under 6 months has increased sharply due to the increase in numbers of Child Protection plans in recent months. The increase in new CP Plans this year has contributed to the increase in plans that are now 6 -12 months at year end.

### Comparator Info – CPP duration at 31st March 2013 (%)

Source: CiN Census

	3 months or less	3 - 6 months	6 - 12 Months	1 - 2 years	2 years and over
<b>England</b>	28.7	25.0	26.9	16.2	3.2
<b>London</b>	26.8	24.4	26.8	17.5	4.4
<b>Harrow</b>	27.0	23.0	25.4	19.7	4.9
<b>Harrow Mar 14</b>	21.4	25.1	40.6	11.8	1.1